



## *iDeaC International Research Seminar*

*Participatory Learning and Action (PLA) Innovations in Maternal and Child Health (MCH)*

**2:00 – 4:00 pm on 17 June 2024**

**Osaka University Nakanoshima Center (6F C+D)**

**iDeaC (Education and Research Institute for Death Control and Prevention), Osaka University is pleased to welcome all the graduate students and researchers to an international seminar on PLA innovations in MCH!**

PLA is a World Health Organisation recommended low-cost intervention to improve MCH in low- and middle-income countries (LMICs). Originally developed by Women’s and Children’s First (WCF), it’s a dynamic process that seeks to empower communities, foster collective action, and promote sustainable development outcomes through active participation, shared learning, and collaborative decision-making.

More recently, it’s been adapted (i.e. ideas originating in LMICs -> HICs) to the UK and showing encouraging results to improve infant feeding, care and dental hygiene practices in South Asians living in East London in a pilot cluster randomised controlled trial. A study evaluating the use of PLA in food poverty in White British schoolchildren in Kent is now underway. Our speakers below will provide an exciting narrative of PLA origins in LMICs (Joanna Drazdzewska), its use in the UK (Dr Logan Manikam) and expansion to APAC (Sumire Fujita).

Dr Manikam will also discuss the recent setup of the National University Health System (Singapore) Division of Community, Family & Child Health and opportunities to collaborate.

For further details about PLA please visit: <https://www.acesoghc.com/pla>

Register [here](#)



Access to the Nakanoshima Center [here](#)

### Lecturers:

#### Dr Logan Manikam

Dr Logan Manikam is a UK Board and General Medical Council certified Public Health Medicine physician with 14 years consultancy, policy academic and clinical experience. He’s current roles are:

- NIHR Clinical Senior and Practitioner Research Fellow at University College London
- Founder/director of Aceso GHC; a boutique public health consultancy firm
- Visiting Research Fellow at National University Singapore.



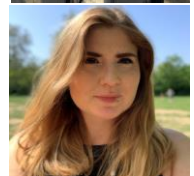
#### Sumire Fujita

Sumire is a UK based public health consultant and Chief Operating Officer of Aceso GHC. Utilising her unique background in sports and exercise science and expertise in nutrition she’s been coordinating several public health projects as well as overseeing PLA’s expansion into APAC. She’s currently an MPH student at St Luke’s International University.



#### Joanna Drazdzewska

Joanna is Head of Programmes and Advocacy at WCF and has significant experience in implementing PLA based programmes in developing countries. Her focus is on increasing demand for health services, reducing gender inequality, and advocating for accessible quality care. Joanna holds a Master’s degree in Development Studies from SOAS.



[Contact] Education and Research Institute for Death Control and Prevention (iDeaC),  
Graduate School of Medicine, Osaka University

[Email: office@ideac.med.osaka-u.ac.jp](mailto:office@ideac.med.osaka-u.ac.jp), TEL: 06-6879-3761

[Support] Friends of WHO Japan

